

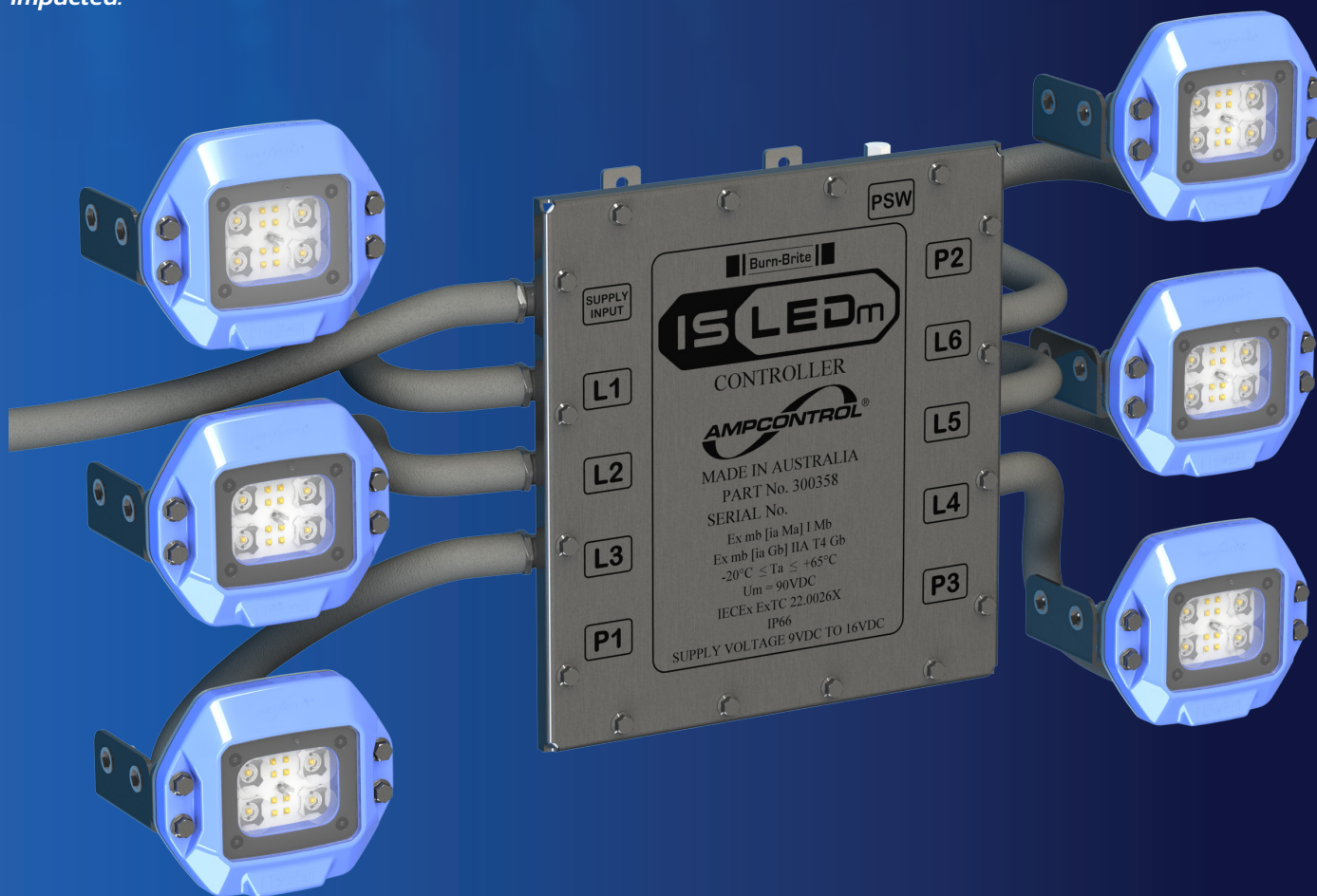


***IS LEDm***

***INTRINSICALLY SAFE LED MACHINE LIGHTING***

## SYSTEM OVERVIEW

The Ampcontrol Intrinsically Safe LED machine lighting solution (IS LEDm) is a high-spec integrated lighting package. The IS LEDm allows for longer overhaul periods, up to 6 years, and reduces non-conformance incidents associated with flameproof solutions. Damage is easily managed as it is not a reportable incident and no other lights the system are impacted.



The IS LEDm system provides an innovative lighting solution that can be used in a multitude of applications.

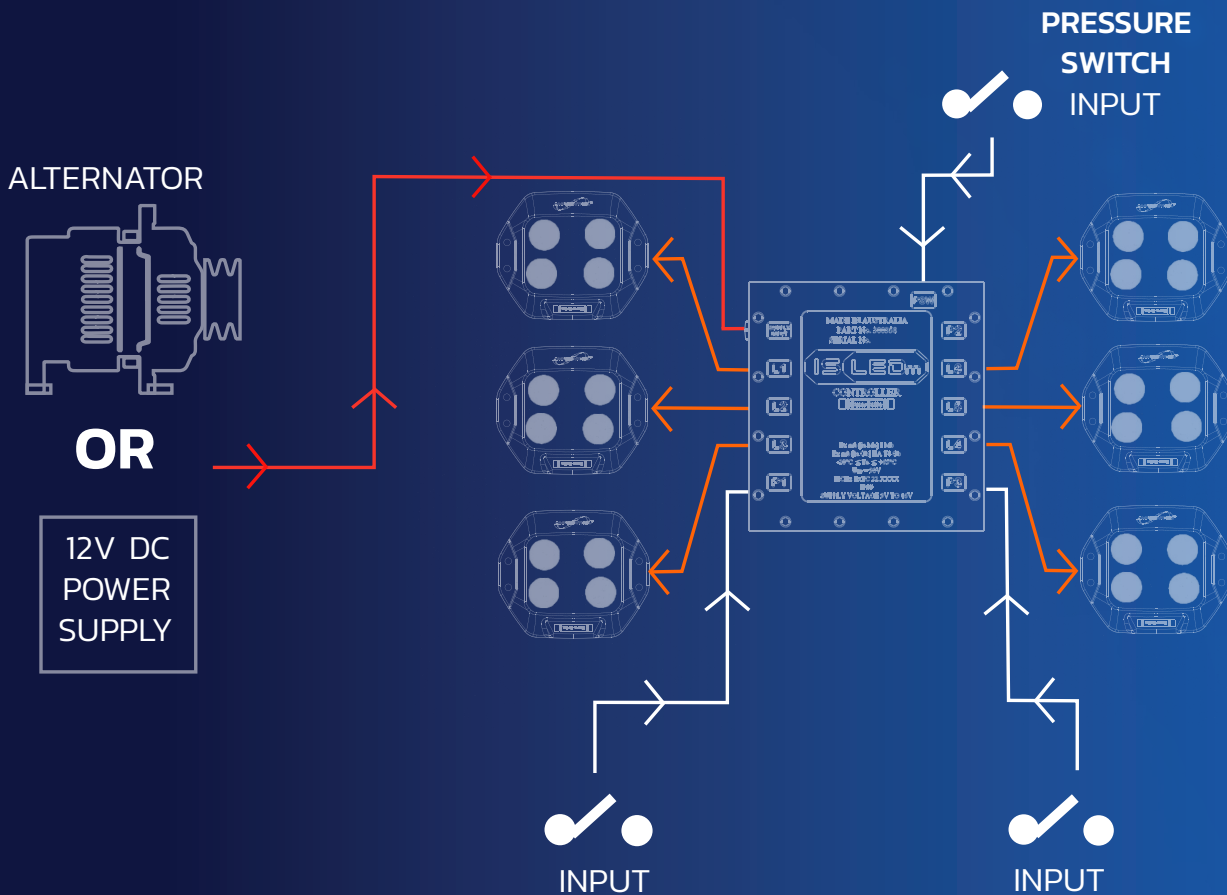
Up to six lights in the one system can be customised individually to suit specific site requirements, with each offering multiple functions in colour, intensity and flash.

### BENEFITS

- Overhaul period extended up to 6 years
- No reportable incidents if lights are damaged
- If another light is damaged, no other lights are impacted
- Dramatically reduced statutory periodic inspection times

## HOW THE SYSTEM WORKS

- IS LEDm system consists of one light controller and up to six lights per controller
- Lights are installed by Ampcontrol Service or the customer directly
- The controller accepts power from alternator or 12v power supply
- The controller accepts multiple inputs (+ optional PLC input)
- Multi-function lights change state depending on inputs
- NOTE: pressure switch input supports reverse switching

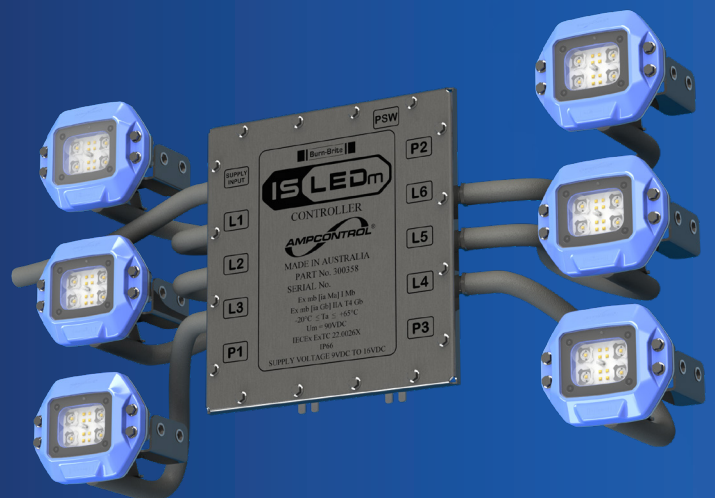


## FEATURES

The IS LEDm controller supports up to six lights which are IP66 sealed.

The controller box draws power safely from the vehicle's alternator, making it ideal for diesel machinery and equipment. It is also suitable for electrical machinery where multifunction lights are required.

The controller allows the lights to be configured in many ways to suit a number of lighting applications. The lights can be programmed to change state based on the inputs to allow for any combination of high or low intensity, dimming, flashing and changing of colours.



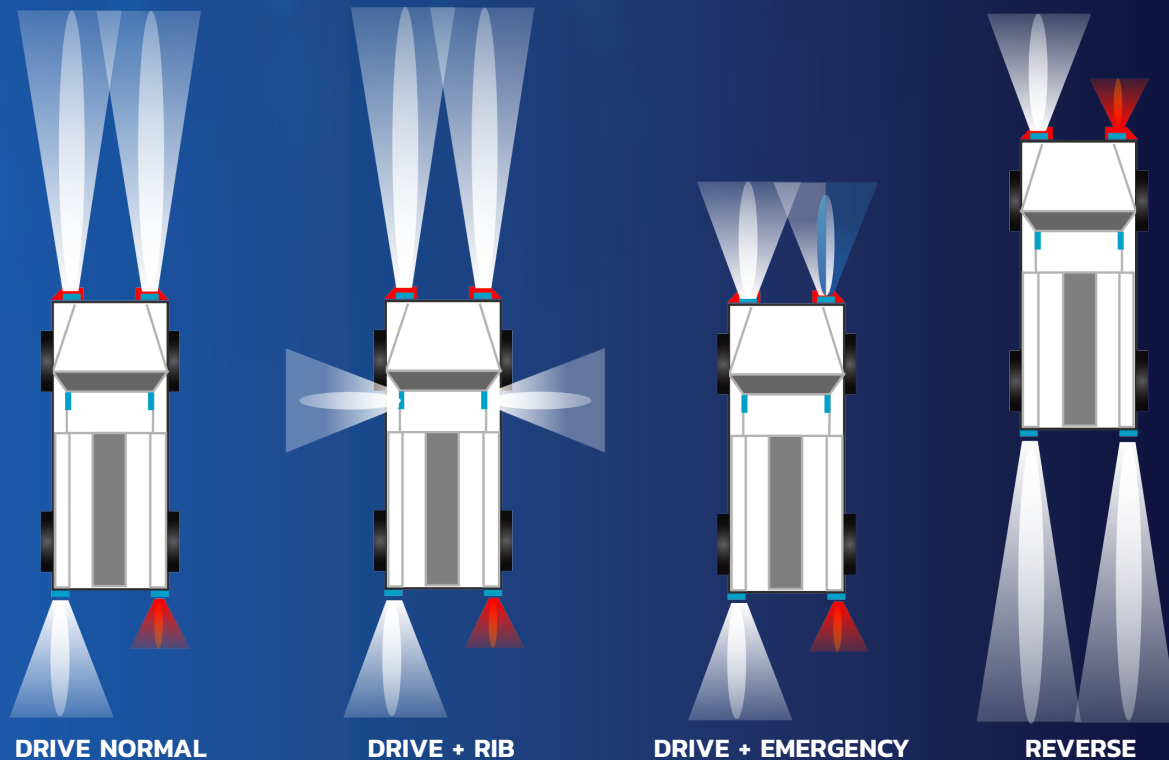
1300 267 373  
AMPCONTROLGROUP.COM



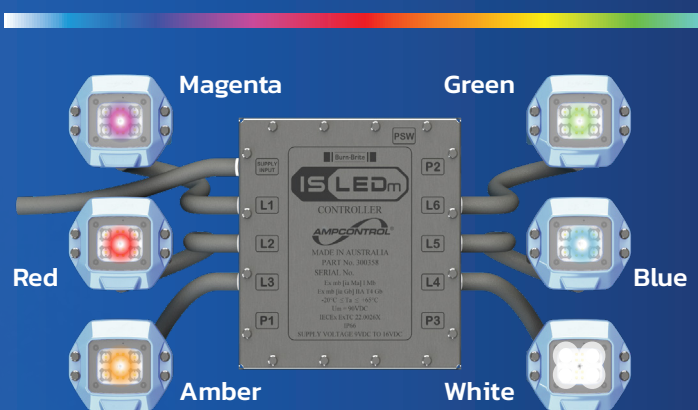
## APPLICATIONS

The IS LEDm can be used across a variety of electric and diesel machine applications including Ampcontrol electric vehicle packages.

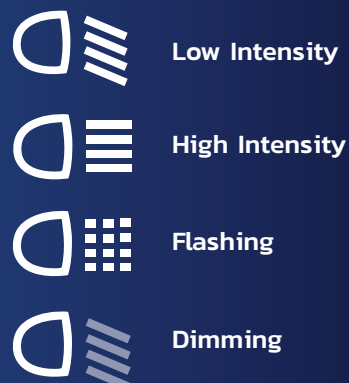
### EXAMPLE APPLICATION: PERSONEL CARRIER



## LIGHTING OPTIONS



## INPUT STATES



## TECHNICAL SPECIFICATIONS

### ELECTRICAL

Max. input power	50	W
Operating temperature (Ta)	-20 to 65	°C
Um	90	V
Operational input range	9-16	V

### ELECTRICAL

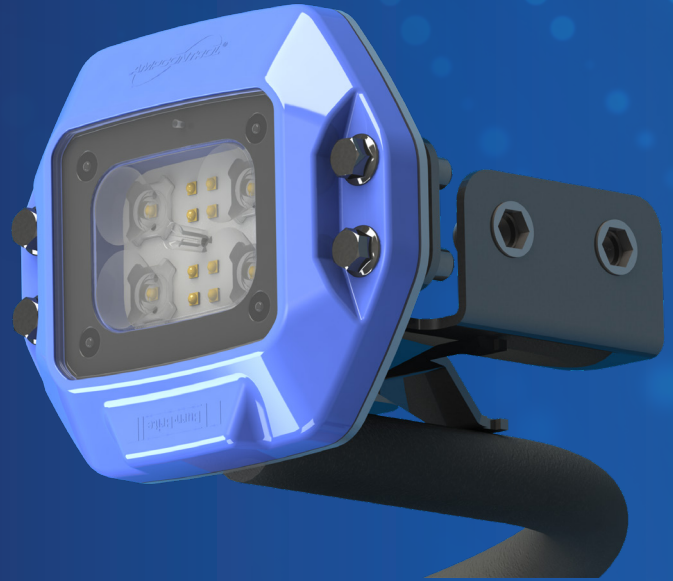
Colours	White, Red, Amber, Blue, Magenta, and Green	
Diming range	12.5-100	%
Beam angle white	17	Deg.
Illuminance at 10m	49.7	Lux
Luminous flux white	~740	Lm
Colour temperature white	~5000	K

### Optional Flashing

Duty cycle	12.5-50	%
Flash period	250ms - 3secs	Sec

### PART NUMBERS AND SPARES

Part Number	Description
302008	6 light kit IS LEDm (1X controller, 6X lights, 6X light brackets and 1X USB cable)
302009	4 light kit IS LEDm (4X controller, 4X lights, 4X light brackets and 1X USB cable)
300358	Controller IS LEDm
300585	Light IS LEDm
300900	Adapter bracket IS LEDm
169120	USB cable IS LEDm (Type A to Type B)
101404	Series 251 - LB1 guard (standard guard)
106145	Series 251 - LB2 guard (LB1 with front guard)
101405	Series 251 - LB3 guard (LB1 bracket without lid)
101364	Series 251 - mesh guard folded, stainless steel
140045	Series 251 - mesh guard flat, stainless steel



### LIGHT BRACKET

The IS LEDm light bracket adaptor is backwards compatible with existing flameproof lights and is supplied as part of the kit.



**DIMENSIONS (mm)**

### LIGHT CERTIFICATION

- Comply with IEC60079.0, IEC 60079.11
- Category: Ex ia Ma I, Ex ia IIA T4 Ga
- Meets MDG 1 requirements

### CONTROLLER CERTIFICATION

- Comply with IEC60079.0, IEC 60079.11, IEC60079.18
- Category: Ex mb [ia Ma] Mb I, Ex mb [ia Ga] IIA T4 Gb



1300 267 373

AMPCONTROLGROUP.COM



1300 267 373  
[AMPCONTROLGROUP.COM](http://AMPCONTROLGROUP.COM)